

**PULL CYLINDERS**



- ✓ Capacities from 10 to 50 ton, and 150 mm stroke.
- ✓ TE models are Spring Return.
- ✓ TD models are Double Acting.
- ✓ For pulling applications: to hook and join plates for welding, tensioning cables, etc.



Capacity		Stroke	Model	Oil Cap.	A
ton	kN	mm	LARZEP	cm <sup>3</sup>	mm
10	93	150	TE01015	204	559
		150	TD01015	356	559
30	302	150	TE03015	660	723
		150	TD03015	954	723
50	483	150	TE05015	1.056	757
		150	TD05015	1.425	757

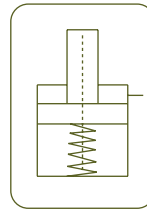


W - X

Single and Double Acting Hand Pumps



P.66

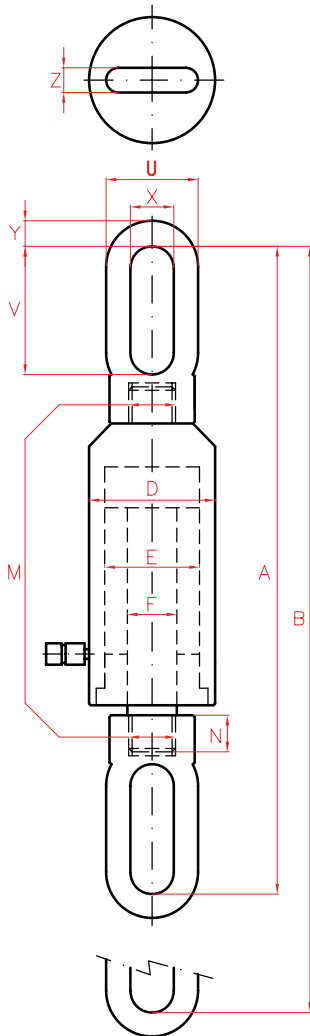


PULL CYLINDERS

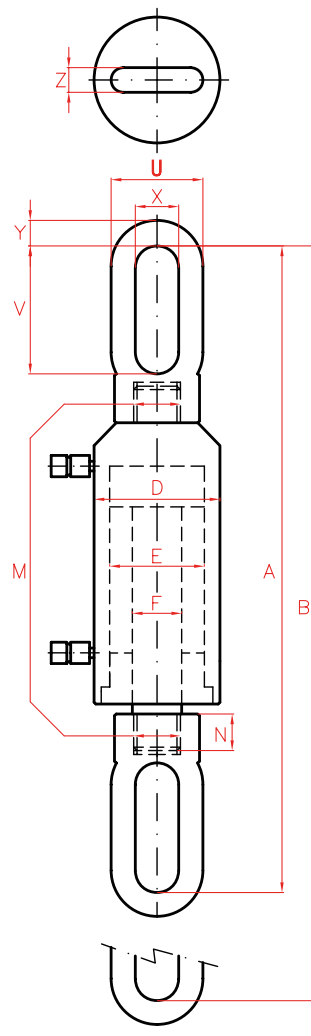


Type	<b>TE - TD</b>
Capacity	10 - 50 ton
Stroke	150 mm
Max. pressure	700 bar

TE - TD CYLINDERS



TE



TD

AP2  
Hoses



P.84

AV - AT - AY  
Pressure Gauges



P.94

	B	D	E	F	M	N	U	V	X	Y	Z	Area	Weight	Model
	mm	mm	mm	mm	mm	mm	mm	mm	mm	mm	mm	cm <sup>2</sup>	kg	LARZEP
	709	86	55	36	M30x2	25	64	119	34	32	22	13,5	14,9	<b>TE01015</b>
	709	86	55	36	M30x2	25	64	119	34	32	22	13,5	14,9	<b>TD01015</b>
	873	125	90	50	M40x2	45	108	153	50	29	29	43,9	32,0	<b>TE03015</b>
	873	125	90	50	M40x2	45	108	153	50	29	29	43,9	32,0	<b>TD03015</b>
	907	148	110	56	M52x2	60	130	150	50	70	39	70,3	60,0	<b>TE05015</b>
	907	148	110	56	M52x2	60	130	150	50	70	39	70,3	60,0	<b>TD05015</b>