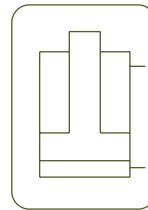


ALUMINIUM DOUBLE ACTING CYLINDERS



- ✓ Capacities from 50 and 100 ton, strokes up to 300 mm.
- ✓ Made from high strength aluminium alloy.
- ✓ All aluminium parts are treated to improve resistance and extend working life.
- ✓ Lightweight. Over 40% weight reduction when compared with steel equivalent.
- ✓ Fitted with steel base plate and saddle for wear resistance.
- ✓ Internal safety valve to prevent accidental over-pressure.
- ✓ Not suitable for high-cycle applications.



ALUM. DOUBLE ACTING CYLINDERS



Type	DDA
Capacity	50 - 100 ton
Stroke	50 - 300 mm
Max. pressure	700 bar

DDA CYLINDERS



Step by step aluminium cylinders. Stage lifting.



DDC
Double Acting High Tonnage Cylinders



P.44

D
Double Acting Cylinders



P.42

DAH
Aluminium Double Acting Hollow Piston Cylinders



P.54

AZ04
Optional Tilting Saddles available



P.90

HBM / HBE
Powerpacks



P.72

Z22107
Air Hydraulic Pumps



P.70

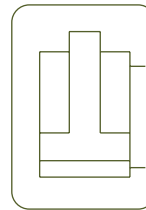
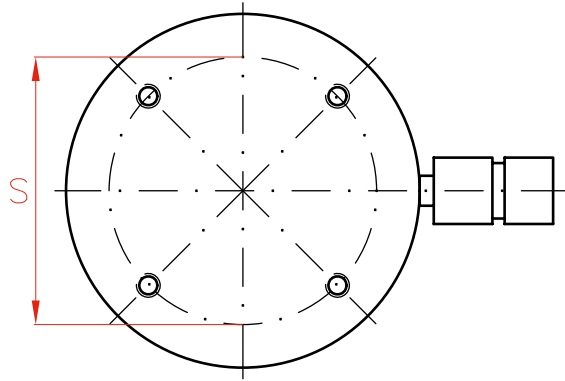
X
Double Acting Hand Pumps



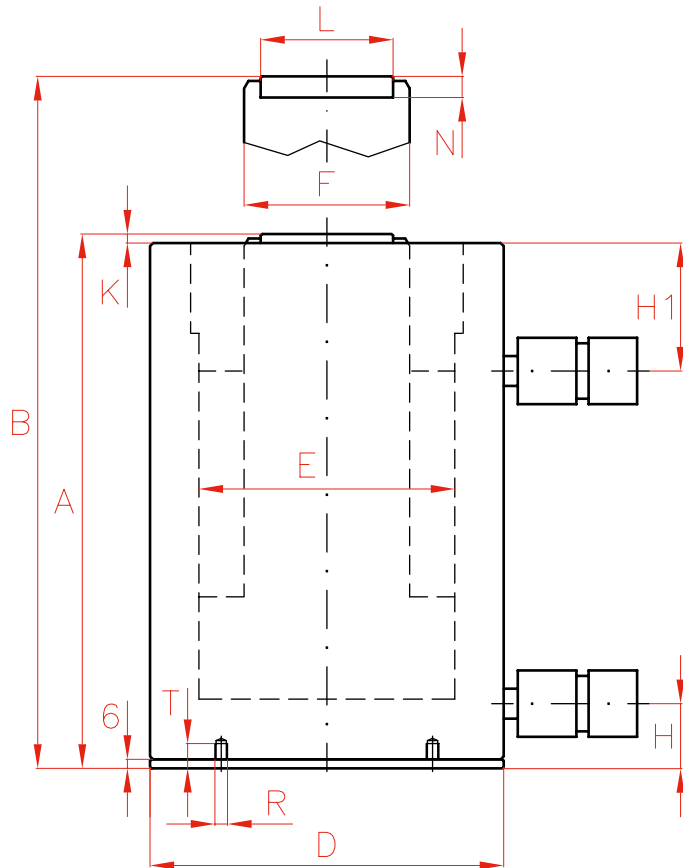
P.66

Capacity	Stroke	Model	Capacity (kN)	Oil Cap.	A	
ton	mm	LARZEP	Push	cm ³	mm	
50	50	DDA05005	487	354	198	
	100	DDA05010	487	709	248	
	150	DDA05015	487	1.063	298	
	200	DDA05020	487	1.418	348	
	250	DDA05025	487	1.772	398	
	300	DDA05030	487	2.126	448	
100	50	DDA10005	911	664	230	
	100	DDA10010	911	1.327	280	
	150	DDA10015	911	1.991	330	
	200	DDA10020	911	2.655	380	
	250	DDA10025	911	3.318	430	
	300	DDA10030	911	3.982	480	



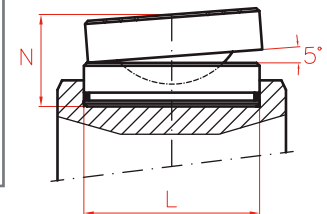


Type	DDA
Capacity	50 - 100 ton
Stroke	50 - 300 mm
Max. pressure	700 bar



OPTIONAL TILTING SADDLES

Model	L	N	Weight
LARZEP	mm	mm	kg
AZ0402	61	39	0,8
AZ0404	88	47	2,2



P.90

B	D	E	F	H	H1	K	L	N	S	R	T	Area	Weight	Model	With tilting saddle	
mm	mm	mm	mm	mm	mm		mm	mm	mm		mm	cm ²	kg	LARZEP	A	Model
248	135	95	75	26	60	7	61	12	115	M6	19	71	8,0	DDA05005	225	AZ0402
348	135	95	75	26	60	7	61	12	115	M6	19	71	9,7	DDA05010	275	AZ0402
448	135	95	75	26	60	7	61	12	115	M6	19	71	11,3	DDA05015	325	AZ0402
548	135	95	75	26	60	7	61	12	115	M6	19	71	12,9	DDA05020	375	AZ0402
648	135	95	75	26	60	7	61	12	115	M6	19	71	14,6	DDA05025	425	AZ0402
748	135	95	75	26	60	7	61	12	115	M6	19	71	16,2	DDA05030	475	AZ0402
280	180	130	110	32	70	5	88	14	160	M6	19	133	16,1	DDA10005	263	AZ0404
380	180	130	110	32	70	5	88	14	160	M6	19	133	19,2	DDA10010	313	AZ0404
480	180	130	110	32	70	5	88	14	160	M6	19	133	22,2	DDA10015	363	AZ0404
580	180	130	110	32	70	5	88	14	160	M6	19	133	25,3	DDA10020	413	AZ0404
680	180	130	110	32	70	5	88	14	160	M6	19	133	28,3	DDA10025	463	AZ0404
780	180	130	110	32	70	5	88	14	160	M6	19	133	31,3	DDA10030	513	AZ0404